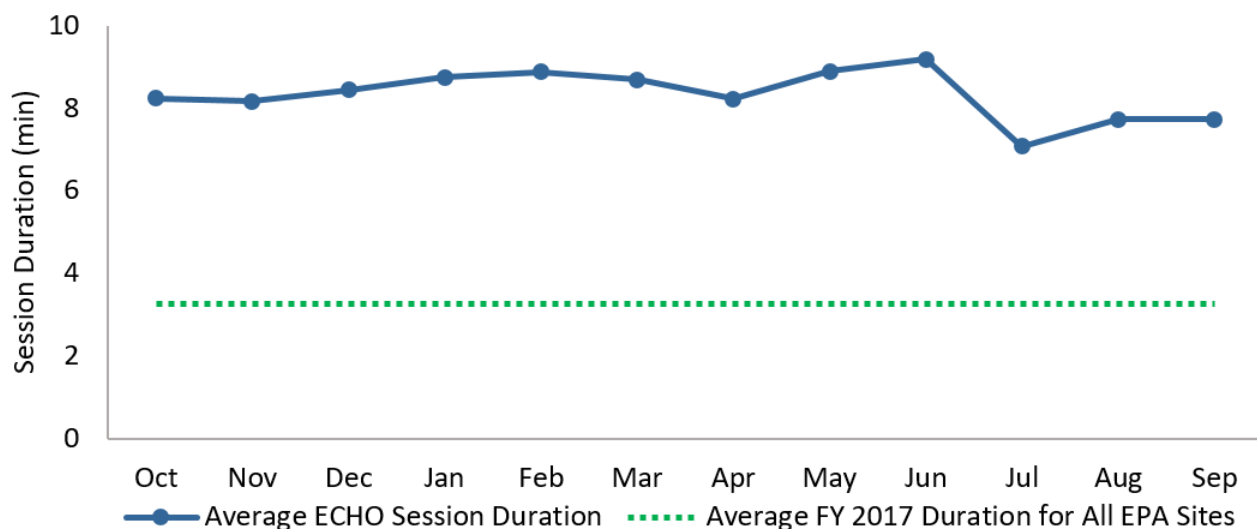


ECHO Usage Statistics: Additional Details

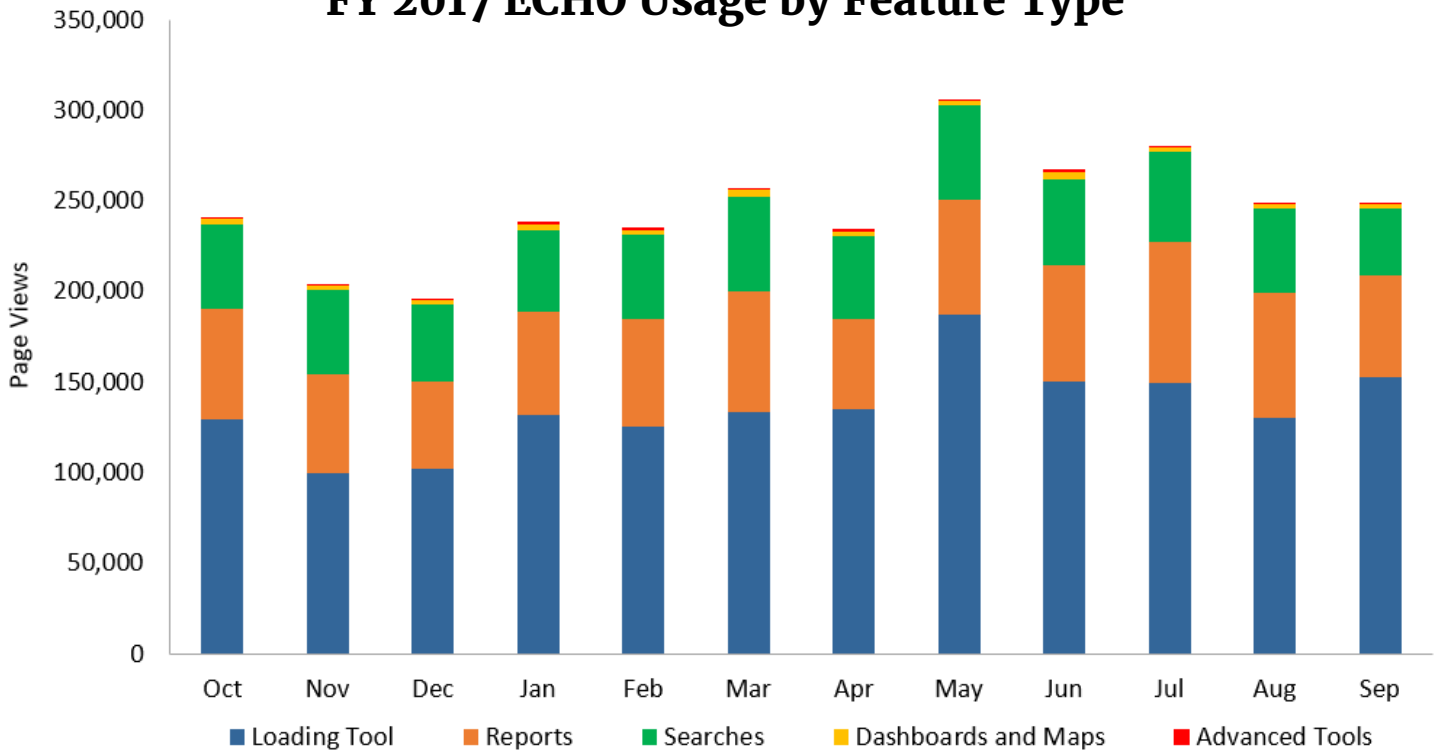
FY 2017 ECHO Usage by Feature

Feature	Total Page Views	Average Monthly Views	Average Monthly Trend
Water Pollutant Loading Tool (all components)	1,627,837	135,653	3.1%
Detailed Facility Report	564,076	47,993	0.7%
Facility Search	452,373	37,698	-1.1%
Enforcement Case Search	105,413	8,784	7%
Enforcement Case Report	85,926	7,161	11%
Effluent Charts (Report)	46,579	3,882	-0.5%
State Dashboards	32,862	2,739	1.6%
Air Pollutant Report	18,667	1,556	3%
Data Downloads	9,788	816	3%
Corporate Compliance Screener	3,373	281	-8%
NPDES eRule Readiness Dashboard	2,405	219	61%
Corporate Compliance Screener (Report)	1,967	164	-10%
State Review Framework Tracker Recommendations	1,602	134	-1.8%
Web Services	1,621	135	18%
State Comparative Maps	928	77	4.2%
Quick Search Widget	475	40	2%

FY 2017 Average ECHO Session Duration

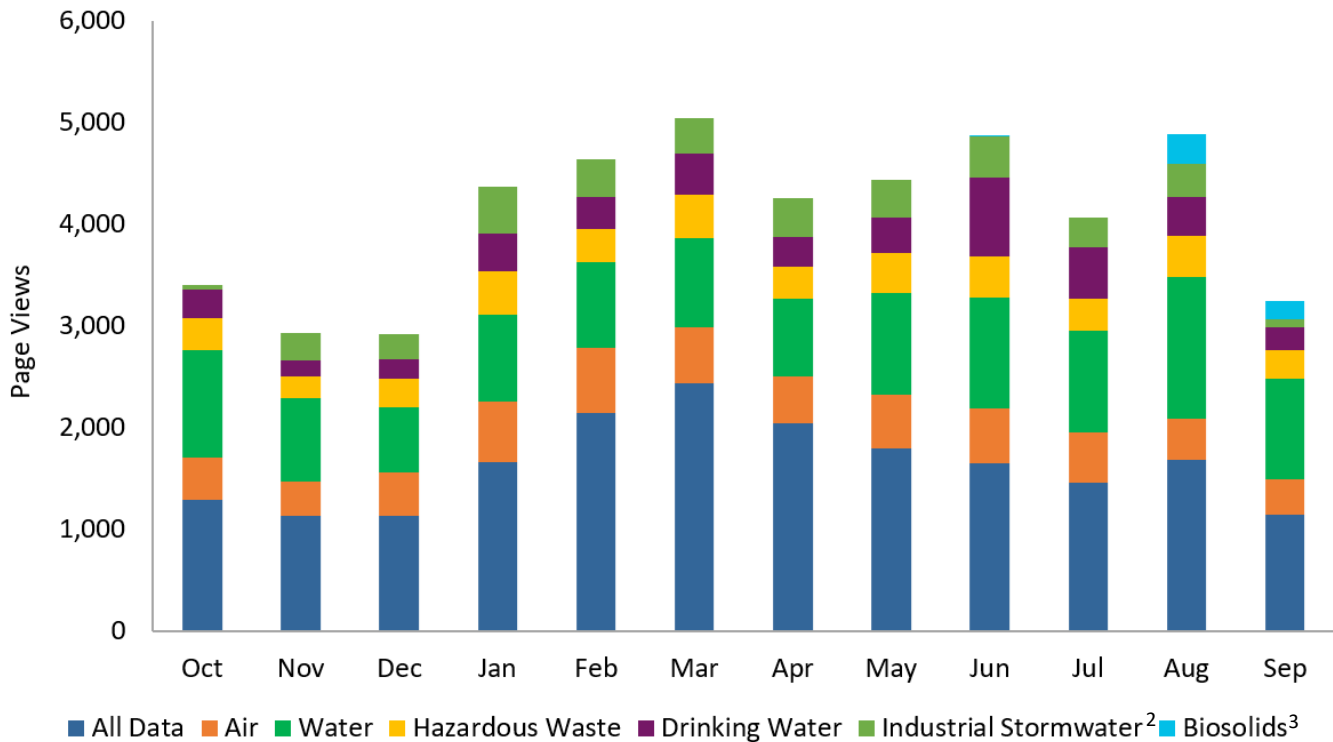


FY 2017 ECHO Usage by Feature Type

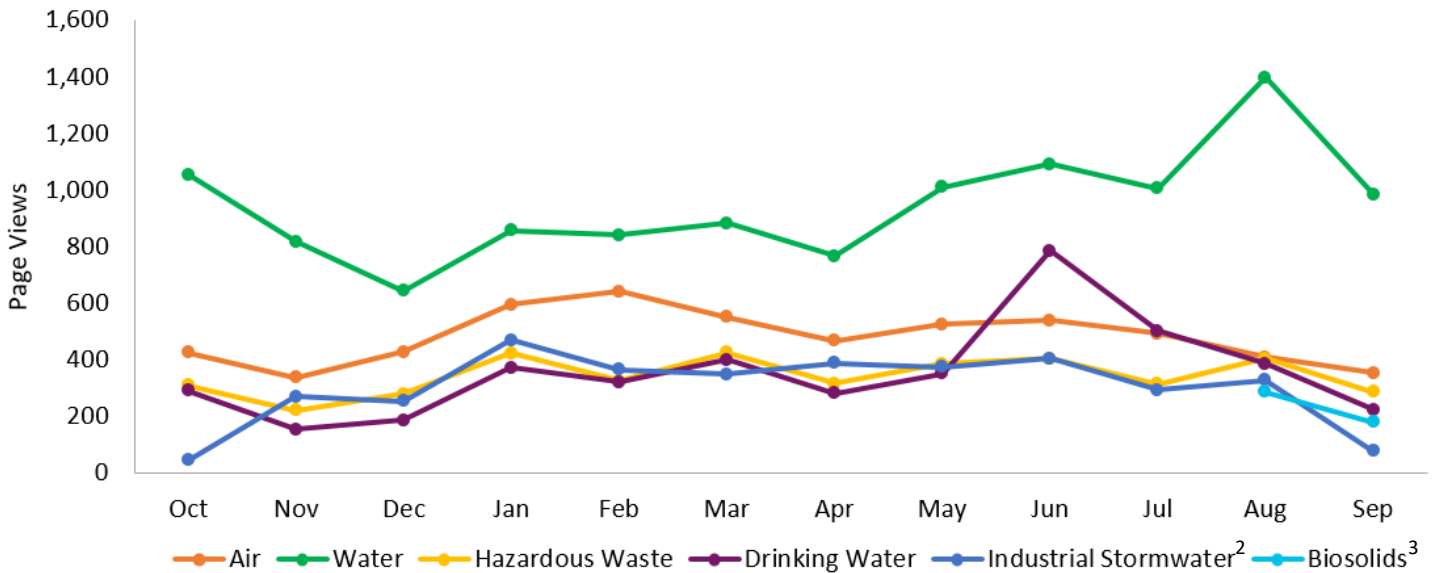


- Loading Tool includes the use of a collection of features available at <http://cfpub.epa.gov/dmr/>.
- Reports include Detailed Facility Report, Enforcement Case Report, Effluent Charts, and Air Pollutant Report.
- Searches include Facility Search and Case Search.
- Dashboards and Maps include all State Dashboards and State Comparative Maps.
- Advanced Tools include Data Downloads, Web Services, and Quick Search Widget.

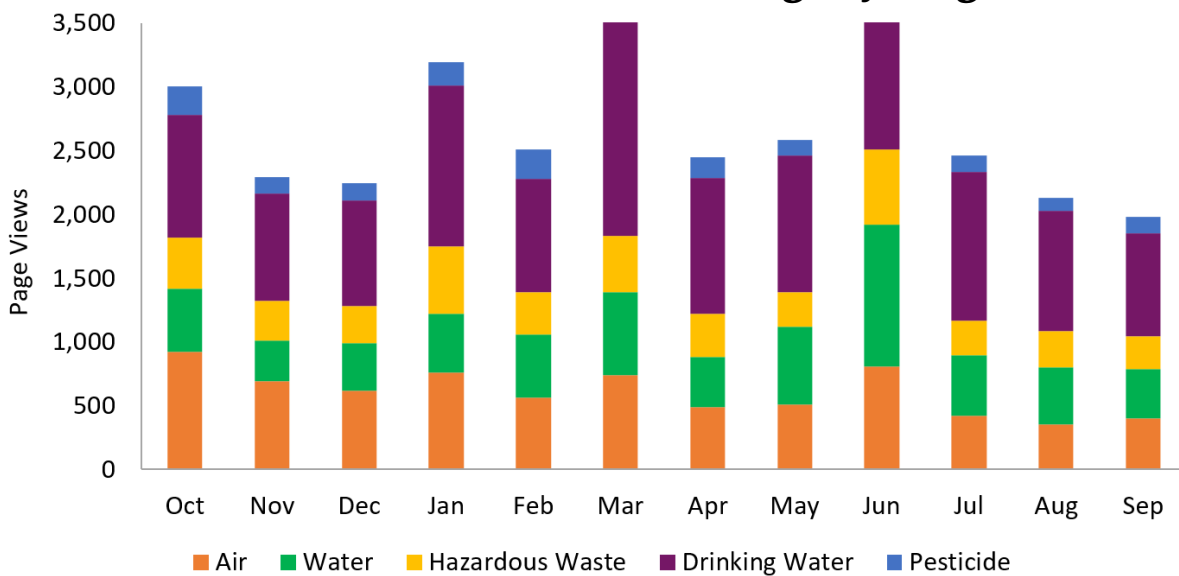
FY 2017 ECHO Facility Search Usage by Search Type¹



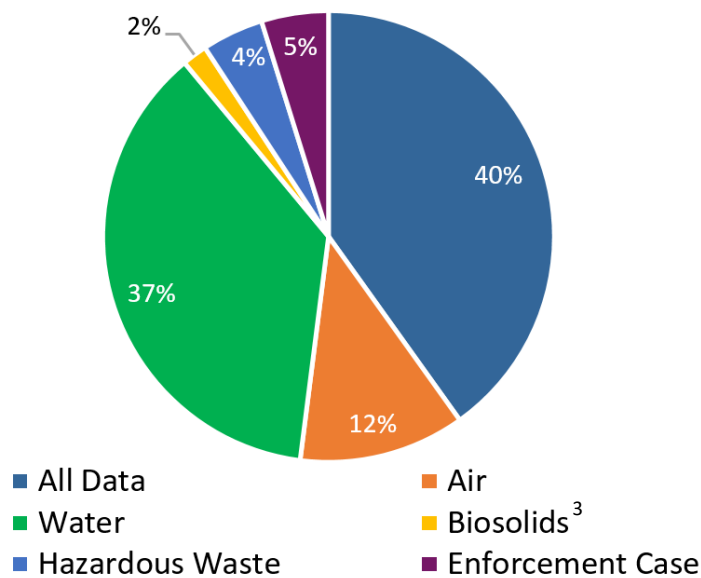
FY 2017 ECHO Facility Search Usage by Program¹



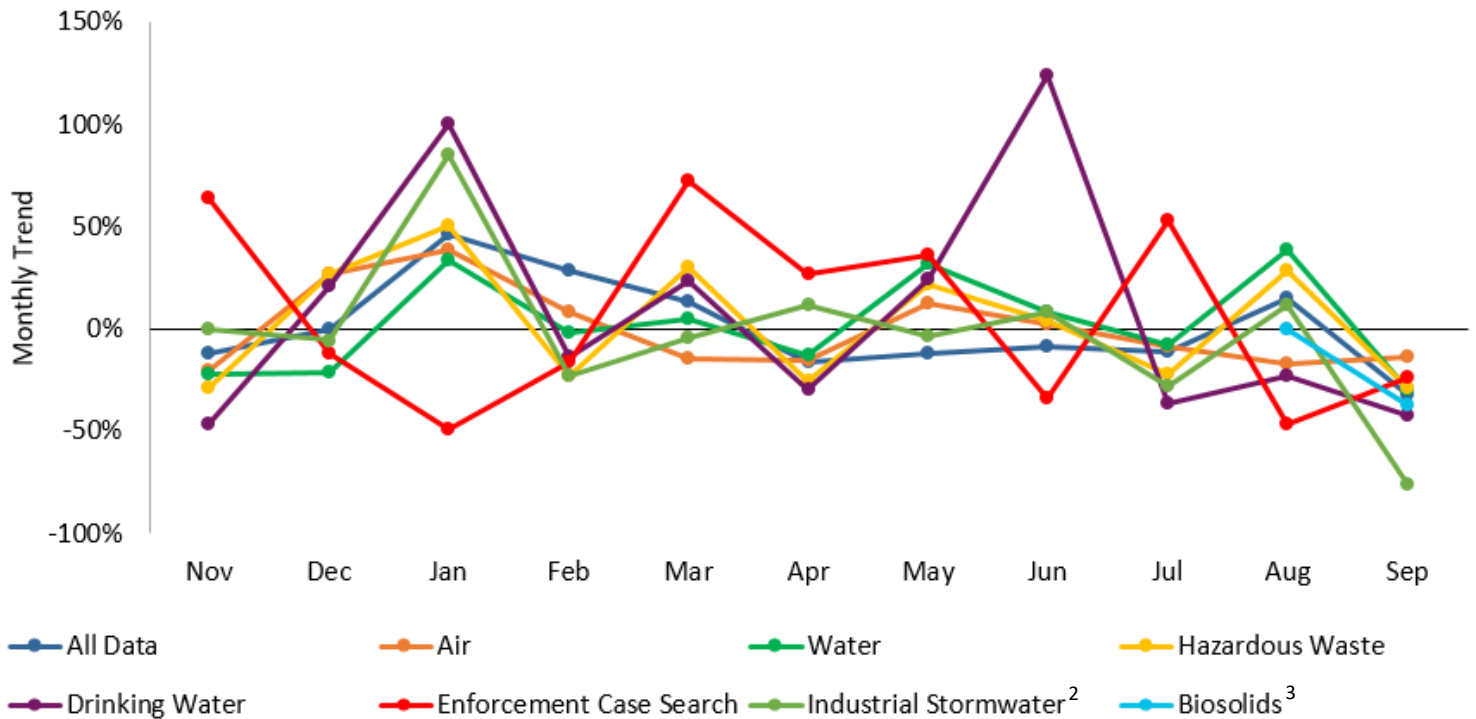
FY 2017 ECHO State Dashboard Usage by Program⁴



FY 2017 ECHO Data Downloads by Program

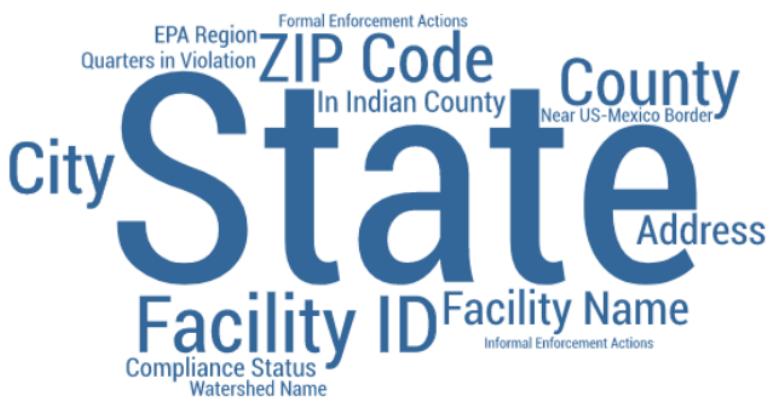


FY 2017 Facility Search and Case Search Monthly Usage Trend¹

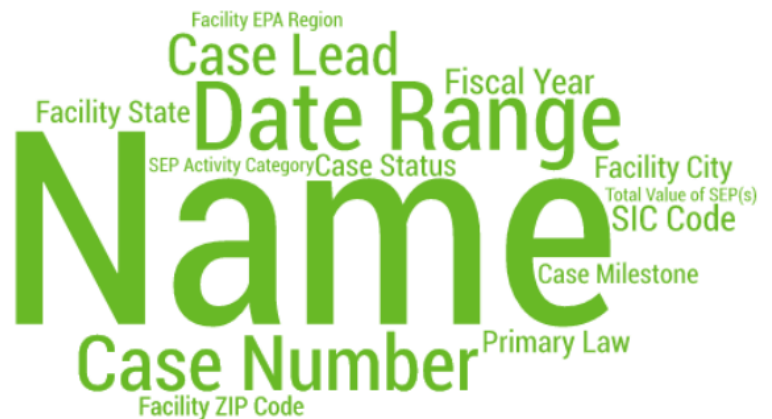


Most Popular Search Options⁵

ECHO Facility Search



ECHO Enforcement Case Search



¹Facility Search usage is tracked based on access to the program-specific URL for the Facility Search; these statistics do not reflect changes made using the Search Type option (for example, changing the Search Type from Air to Water does not increase Water page views).

²The program-specific URL for the Industrial Stormwater search was not fully implemented on the homepage until November 2016.

³The Biosolids search and downloads were released in August 2017.

⁴The State Air Dashboard is the default dashboard view when navigating from the ECHO Home page.

⁵Most popular search options are based on REST service parameters passed in the last 100,000 queries requested. The data presented in these visualizations include queries requested between September 2, 2016 and December 16, 2016.